

Odry 5-0/3
 Odry 5-0/4

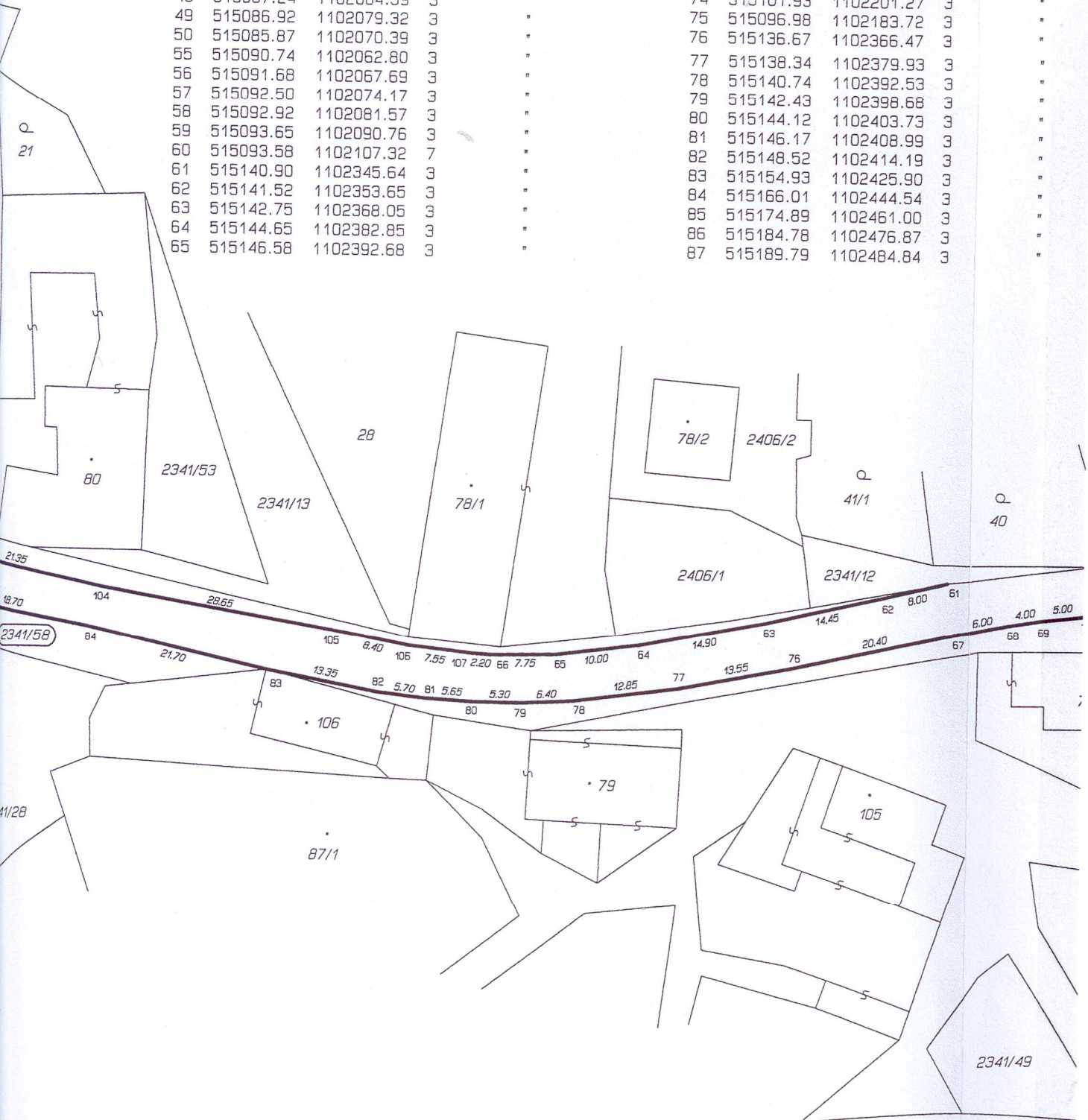


Seznam souřadnic (S-JTSK)
Číslo bodu Souřadnice pro zápis do KN

Číslo bodu	Y	X	Kód kv.	Poznámka
38	515090.99	1102159.38	7	obruba
39	515090.45	1102156.08	7	"
41	515088.84	1102146.36	3	"
42	515088.38	1102141.27	3	"
43	515087.97	1102134.20	3	"
44	515087.72	1102121.20	7	"
45	515087.73	1102117.18	7	"
46	515087.36	1102097.15	3	"
47	515087.51	1102088.71	3	"
48	515087.24	1102084.39	3	"
49	515086.92	1102079.32	3	"
50	515085.87	1102070.39	3	"
55	515090.74	1102062.80	3	"
56	515091.68	1102067.69	3	"
57	515092.50	1102074.17	3	"
58	515092.92	1102081.57	3	"
59	515093.65	1102090.76	3	"
60	515093.58	1102107.32	7	"
61	515140.90	1102345.64	3	"
62	515141.52	1102353.65	3	"
63	515142.75	1102368.05	3	"
64	515144.65	1102382.85	3	"
65	515146.58	1102392.68	3	"

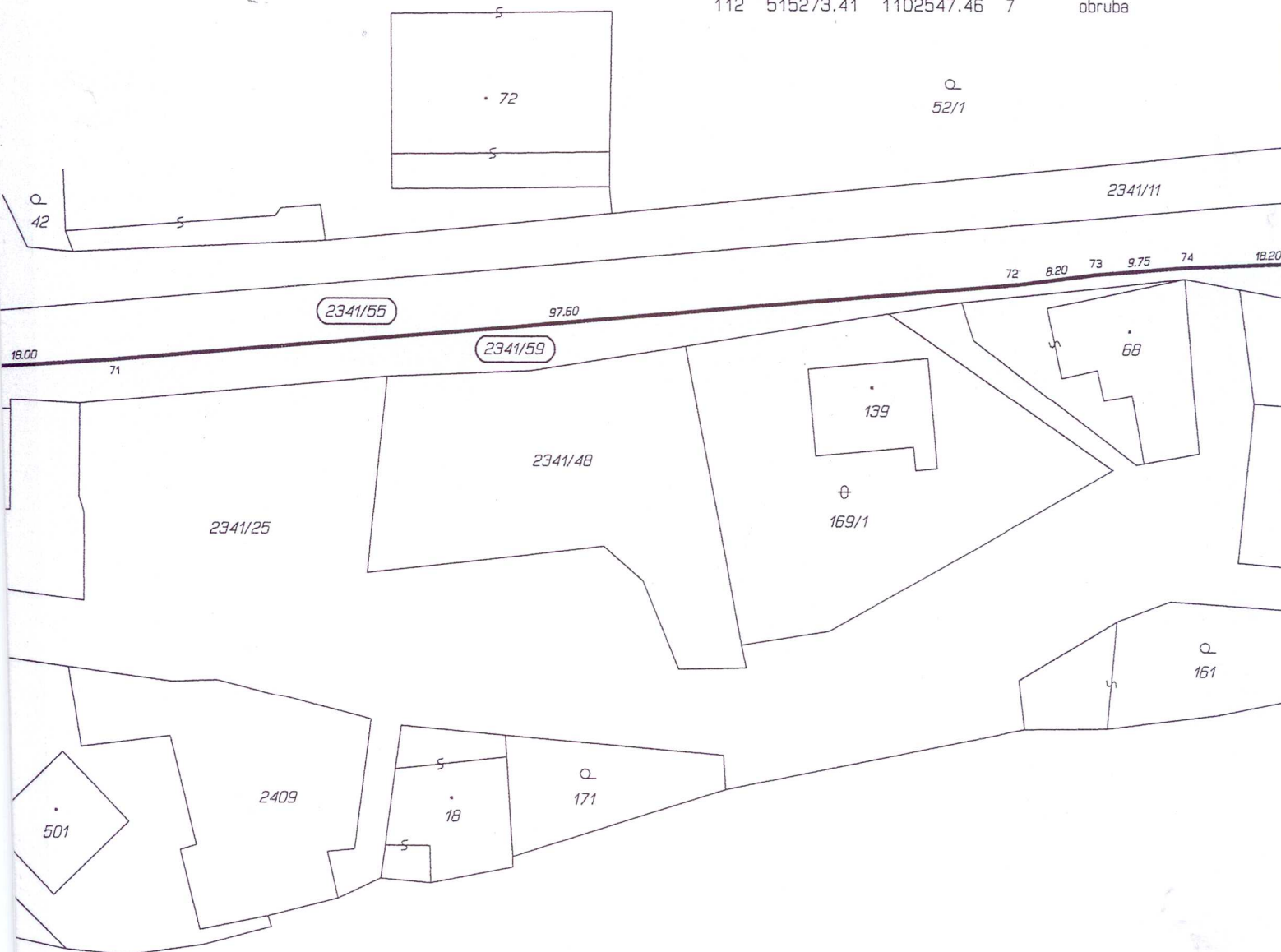
Seznam souřadnic (S-JTSK)
Číslo bodu Souřadnice pro zápis do KN

Číslo bodu	Y	X	Kód kv.	Poznámka
66	515148.83	1102400.09	3	obruba
67	515134.73	1102346.17	3	"
68	515133.92	1102340.16	3	"
69	515133.28	1102336.22	3	"
70	515132.23	1102331.32	3	"
71	515127.77	1102313.86	3	"
72	515105.69	1102218.83	3	"
73	515104.21	1102210.76	3	"
74	515101.93	1102201.27	3	"
75	515096.98	1102183.72	3	"
76	515136.67	1102366.47	3	"
77	515138.34	1102379.93	3	"
78	515140.74	1102392.53	3	"
79	515142.43	1102398.68	3	"
80	515144.12	1102403.73	3	"
81	515146.17	1102408.99	3	"
82	515148.52	1102414.19	3	"
83	515154.93	1102425.90	3	"
84	515166.01	1102444.54	3	"
85	515174.89	1102461.00	3	"
86	515184.78	1102476.87	3	"
87	515189.79	1102484.84	3	"



Seznam souřadnic (S-JTSK)
 Číslo bodu Souřadnice pro zápis do KN

Číslo bodu	Y	X	Kód kv.	Poznámka
86	515194.80	1102491.75	3	obruba
89	515203.58	1102502.43	3	"
90	515211.11	1102509.78	3	"
91	515217.42	1102515.12	3	"
92	515233.35	1102525.86	3	"
93	515251.53	1102538.52	3	"
94	515257.60	1102542.95	3	"
95	515224.26	1102514.66	3	"
96	515217.11	1102508.85	3	"
98	515214.19	1102506.32	3	"
99	515210.02	1102502.48	3	"
100	515203.94	1102495.57	3	"
101	515198.78	1102489.22	3	"
102	515193.33	1102481.45	3	"
103	515180.77	1102460.24	3	"
104	515170.11	1102441.73	3	"
105	515156.73	1102416.37	3	"
106	515152.72	1102409.01	3	"
107	515149.62	1102402.13	3	"
108	515275.62	1102558.31	7	"
109	515267.60	1102541.79	3	"
110	515253.04	1102533.25	3	"
111	515271.33	1102537.23	7	sloupek
112	515273.41	1102547.46	7	obruba



Výkres č.2

